

Cape Lodge



a luxurious boutique hotel

Western Australia

Margaret River



EXPERIENCE ANOTHER WORLD



LUXURY
LODGES
OF AUSTRALIA

Caves Road, Yallingup, Western Australia, 6282 Phone: 61 8 9755 6311 Fax: 61 8 9755 6322
www.capelodge.com.au email: stay@capelodge.com.au

INDEX

| | Page |
|------------------------------------|------|
| Cape Lodge | 2 |
| Location and Access | 3 |
| Hotel Accommodation and Facilities | 4 |
| Conference Facilities | 5 |
| The Cape Lodge Restaurant and Bar | 6 |
| One Step Further | 7 |
| Things to See and Do | 8 |
| To Book | 9 |
| Contact Details | 9 |
| Terms and Conditions | 10 |





CAPE LODGE

Follow the coast three hours south of Perth, Western Australia and you will find one of Australia's finest small luxury hotels. As you meander down the winding driveway of the intimate country estate you will discover why Cape Lodge has been voted as the Best Boutique Hotel in Australia in the In the World's Top 100 Hotels 2011.

Cape Lodge is also a member of the prestigious "Luxury Lodges of Australia" and neighbours the great wineries of Vasse Felix, Moss Wood, Pierro and Cullen. The extraordinary beauty and diversity of the area is striking, from its majestic karri forests and pristine beaches to the rural mosaic of viticulture and dairy farming.

Cape Lodge is designed for the discerning traveller and small executive groups requiring sophistication, privacy and exclusivity to conduct business meetings, reward associates or entertain important guests. It is likened to staying at a private country estate with the trappings of a world class hotel.

Spread throughout 40 acres of forest, parkland, manicured gardens and lakes are 22 beautifully appointed secluded rooms and suites, a magnificent Private Residence which sits very privately on its own 3 acres and the quaint two bedroom self contained Cottage.

It is close to local attractions including the Margaret River Wine region, 18 hole golf course, caves, beaches, whale watching, abseiling, & horse riding

Depending on your needs we can personalise our five- star establishment to suit your groups requirements.

Cape Lodge remains the most luxurious exercise in the art of relaxation, great food and fine wine.



LOCATION and ACCESS

Cape Lodge is located on its own vineyard in the Margaret River region in the South-West corner of Western Australia. This area is one of the most picturesque regions of the State with a ruggedly beautiful coastline, majestic native forests and boutique wineries.

Cape Lodge is located on Caves Road; only three kilometres from the Indian Ocean and surrounded by the great wineries of Margaret River. Situated in the heart of the premium vineyard country 20 minutes North of Margaret River township, central to the townships of Dunsborough and Yallingup, 3 hours easy drive south of Perth and 40 minutes from the Busselton regional airport.

The climate is described as Mediterranean with long warm sunny days in Summer, beautiful bright crisp Spring weather and snug Winter days ideal for drinking red wine by the fire.

All international and domestic flights are into Perth and then from there the following transfer options are available;

| | |
|--------------------|--------------------------------------------------------------------------------------------------------------------|
| By Road | Three hours drive South of Perth. Self drive or by private/public coach transportation |
| Limousine | Luxury limousine with airport meet / greet/ luggage. |
| Aircraft Charter | Forty Five minutes to our private airstrip or alternatively Busselton, Margaret River or Leeuwin Estate airstrips. |
| Helicopter Charter | A superb 80 minute flight from Perth following the coast direct to Cape Lodge. |
| Hire Cars | All major hire car companies are available from Perth Airport or city. |

Please contact us for further travel access and/or transfer service information, winery & tour operators, car hire and taxi services are available once you are within the region, and we will be delighted to assist you with this.



ACCOMMODATION and FACILITIES

Cape Lodge offers you exclusive five star accommodation with 22 luxury suites spread throughout forty acres of manicured lawns, parklands, lakes and vineyard

1 Lodge King Room

The Lodge King Room is 42m². The room has wheelchair access & disabled equipped bathroom with shower only. The room features a lounge/sitting area and king size bed.

1 The Lodge Suite

The Lodge Suite is a two-room suite located in the Main Lodge and has garden and lake views. The suite features the main bedroom with king size bed, spacious marble ensuite with large spa bath and separate shower. The second room contains a relaxing lounge area with TV, CD player and a second ensuite.

4 Garden Wing Rooms

Garden wing rooms are 38m² and feature private courtyards with outdoor settings and tranquil garden views. All feature king-size beds, TV and DVD with bath/shower in the ensuite.

8 Superior Spa Suites

The Superior Spa suites are 55m² and all have wonderful views of the lake and gardens. They feature king-size beds, open plan ensuite with large spa bath and shower and a lounge area with TV, DVD and CD player.

8 Forest Spa Suites

The Forest Spa Suites are 70m², situated in a woodland setting overlooking a private lake and surrounded by natural landscaping. They are a short stroll from the restaurant. All suites feature king-size beds, luxury bathrooms with double spas and separate showers. The lounge area includes TV, DVD and CD player.

The Residence

A three bedroom residence with gourmet kitchen and a two bedroom Guest House situated on its own private grounds. It can be used as an alternative venue to host private dinners, meetings and perhaps a cooking class. The residence is also suitable to accommodate small groups and the grassed grounds ideal for outdoor activities.

The Cottage

The loft design Cottage is located slightly away from the hotel overlooking the vineyard and is ideal for those looking for extra seclusion. It features a master bedroom on the mezzanine level with king size bed and ensuite with shower and a second bedroom on the ground floor with king size bed and ensuite with shower. The ground floor also comprises a fully self-contained kitchen and open plan lounge and dining area which opens onto a covered paved garden courtyard.

Hotel Facilities

Swimming Pool & Tennis court

Walking/Jogging Track

Outdoor grounds for small group activities



CONFERENCE FACILITIES

The hotel can be exclusively reserved for private groups and events or you have the option of private meeting rooms, a spacious boardroom and private dining rooms. There is natural lighting in all meeting rooms which are luxuriously finished and comfortable.

MEETING ROOM 1 & 2

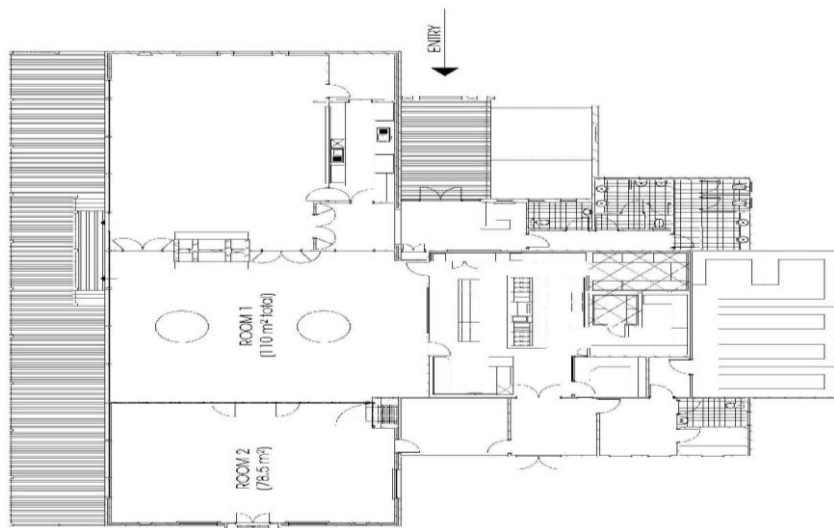
Our private meeting rooms can be divided into two room configurations, room 1 & 2 or both combined. A moveable wall divides the conference rooms from the restaurant and converts into a large function room if required.

THE BOARDROOM

The new boardroom located in the main lodge has been established for small groups and executive meetings. The boardroom offers privacy with its spacious boardroom table ideal for a business gathering.

- Whiteboard /Flip chart and projection screen included
- Audio visual equipment available on request

| Room | Square Metres | Ceiling Height | Theatre | Classroom | U-Shape | Boardroom |
|------------|---------------|----------------|---------|-----------|---------|-----------|
| Room 1 | 30 | 3.5 | 30 | 20 | 20 | 20 |
| Room 2 | 30 | 3.5 | 30 | 20 | 20 | 20 |
| Room 1 & 2 | 60 | 3.5 | 60 | 40 | 34 | 30 |
| Lodge | 17 | 3.5 | - | - | - | 8 |
| Boardroom | | | | | | |





RESTAURANT and BAR

Our award winning lake side restaurant is ranked in the **Top Ten in the World for Food** by Conde Nast Traveller and is being described as one of Australia's finest new generation gourmet establishments. Its rich burgundy and lavish furnishings, finished with local artwork and an inviting fireplace makes the restaurant warm and luxurious anytime, day or night. The restaurant can be used for group dining and functions. An adjoining lounge area is ideal as a break out room, for cocktail receptions and privacy when required.

The restaurant and bar also offer a fantastic 14,000 bottle temperature controlled wine cellar and our sommelier would be delighted to design wine pairing suggestions to accompany your menu.

Our chef Tony Howell and his award winning culinary team will ensure that your group will experience the finest of fresh local produce and quality wine.

CAPE LODGE MENU OPTIONS

Tea Breaks \$15 per person
Pastries, Fresh Fruit, Muffins
Fruit Juice, Mineral Water
Fresh Coffee, Herbal Teas

Tea & Coffee \$10 per person
Continuous fresh coffee & tea

Lunches
Produce Lunch Platters \$65 per person
Leg Ham, Roast Beef, Roasted Chicken
Oven-roasted tomato, seasonal salads
Fresh Fruit Platter
Fresh Coffee, Herbal Teas and Juices

Gourmet Platters \$85 per person
House smoked salmon
Grilled Pemberton marron
Smoked meats
Harvey beef fillet – medium rare with mustards
Freshly baked bread
Steamed asparagus
Mediterranean vegetables
Rocket and parmesan salad
Dessert
Selection of local and imported cheeses
Fresh Coffee, Herbal Teas and Juices

Dinner Menus
Pre Dinner Canapes \$ 35 per person
Three Course, Side Dish & Coffee \$ 95 per person
Four Course, Side Dish and Coffee \$110 per person
Five Course Tasting Menu \$135 per person

Prices are subject to change without notice

ONE STEP FURTHER...

At Cape Lodge, our dedicated team can personalise your groups experience to ensure a memorable occasion. We specialise in:

Private Food & Wine Master Classes

Our gourmet master class events are designed for people wishing to learn, experience and interact with epicures, specialists and producers in an exclusive and relaxed atmosphere. Our programs include hands on instruction, demonstrations, interactive classes, hosted tastings and food and wine partnering experiences with a large amount of time dedicated to dining and pure enjoyment.

Cooking Classes

Presented by Executive Chef Tony Howell the cooking classes are designed to be leisurely and interactive with a strong focus on fresh regional produce.

Cooking Class and Dinner

\$230 per person

Minimum 12 Guests

Winemaker For a Day and Lunch at Vasse Felix

An exciting and unique opportunity to play winemaker. The process of blending wine varieties will be explained before each guest is given the ingredients to create their own wine. On conclusion the Vasse Felix winemaker will judge each blend and prizes are awarded.

Gourmet Picnics

Picnic hampers are also available to enjoy amidst the sweeping gardens or whilst touring the region.

Tailored Itineraries

At Cape Lodge we are able to arrange private tutored wine tastings, behind the scenes tours of premier Margaret River vineyards, local food producers and artisan galleries. We can tailor personalised itineraries for your group's requirements.

The Taste of Margaret River Tour

Experience the incredible natural beauty and diversity of the Margaret River from pristine coastline and karri forests, limestone caves and beaches to the artisan galleries, boutique vineyards and farm produce stores.

Corporate Development

In association with the Margaret River based Merribrook Corporate Outdoors, one of Australia's most dynamic specialists, we can provide a wide range of on site management training, leadership programs, team building activities and wilderness training events.



THINGS TO SEE and DO

Wineries

Surfing beaches & swimming

18 Hole Golf Course

Coastal Nature Trails

Artisan Galleries

Whale Watching

Abseiling

Gourmet Touring – Food & Wine trails

Cave & Nature Tours

Leeuwin Estate Wine Flights

Horse Riding

Fishing and Diving Charters

Boat Cruises

Local Day Spa's

Cheese Factories

Chocolate Factories

Breweries

Forest and National Parks

Tennis

Bushwalking and Eco Tours





TO BOOK

Please contact Cape Lodge on 08 9755 6311 or email drew@capelodge.com.au to discuss how our dedicated and professional team at Cape Lodge can make your next meeting a successful and luxurious occasion.

CONTACT DETAILS

Cape Lodge
3341 Caves Road
YALLINGUP WA 6280

Tel: (08) 9755 6311
Fax: (08) 97556322
Email: stay@capelodge.com.au
www.capelodge.com.au



TERMS and CONDITIONS

1. Confirmation of Booking

Written confirmation of booking must be received within seven (7) days of making the booking. A 10% deposit of the anticipated total account including food and beverage is required to secure the reservation.

Where a signed contract and deposit has not been received within ten (10) days of the initial tentative reservation all rooms held will be released and the booking will be considered cancelled.

Twelve (12) weeks prior to the group arrival a review of all room requirements will be needed and full payment of the anticipated total is required.

Any rooms required after this date will be subject to availability

2. Cancellation Policy

Twelve (12) Weeks Prior to arrival full deposit refunded less a \$500 administration fee
Within Twelve (12) Weeks of arrival no refund

3. Group Booking Conditions

Menus and guest numbers must be confirmed 1 month prior to arrival.

The Cape Lodge Restaurant is licensed, therefore no BYO is permitted.

A \$300 per hour Venue Fee is applicable after midnight

Nothing is to be adhered to the walls or any other surface of the building without prior arrangement

The Group Booking Organisers will be charged for any damages or heavy cleaning required as a result of the function Cape Lodge takes great care when looking after Guest's belongings. Where possible all lost property will be returned to the rightful owner. However, we can not accept responsibility for the loss or damage of items during or after the function As Cape Lodge sites within a tranquil environment and there are a number of private residences in close proximity please keep amplified music and excessive noise to a minimum

Should the management of Cape Lodge have cause to believe that a function will adversely affect the running of our business, its security or reputation, we reserve the right to cancel the function booking

All prices are current at the time of quotation and are subject to change without notice.

4. Payment of Accounts

Unless credit facilities have been established prior, full payment must be made upon check out. Credit Card Payments are subject to a 2.5% Merchant Fee. The final account will be presented to you for payment in full (less deposits) at the conclusion of the function.

5. I agree to the above Terms and Conditions

Name _____

Signature _____ Company _____

Position _____ Date _____